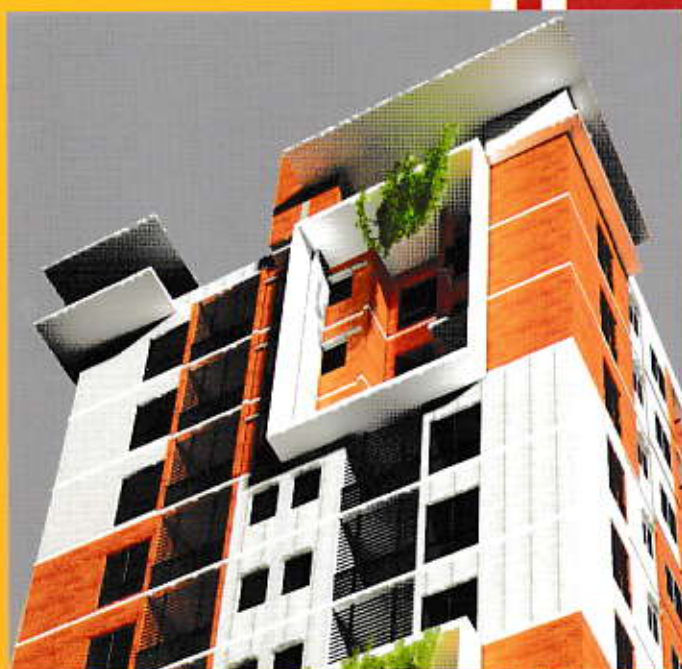


Hiver Tower

AT RACE COARSE, POLICE LINE, COMILLA



A P R O J E C T O F

Hivertech ltd
PROPERTIES

Night View



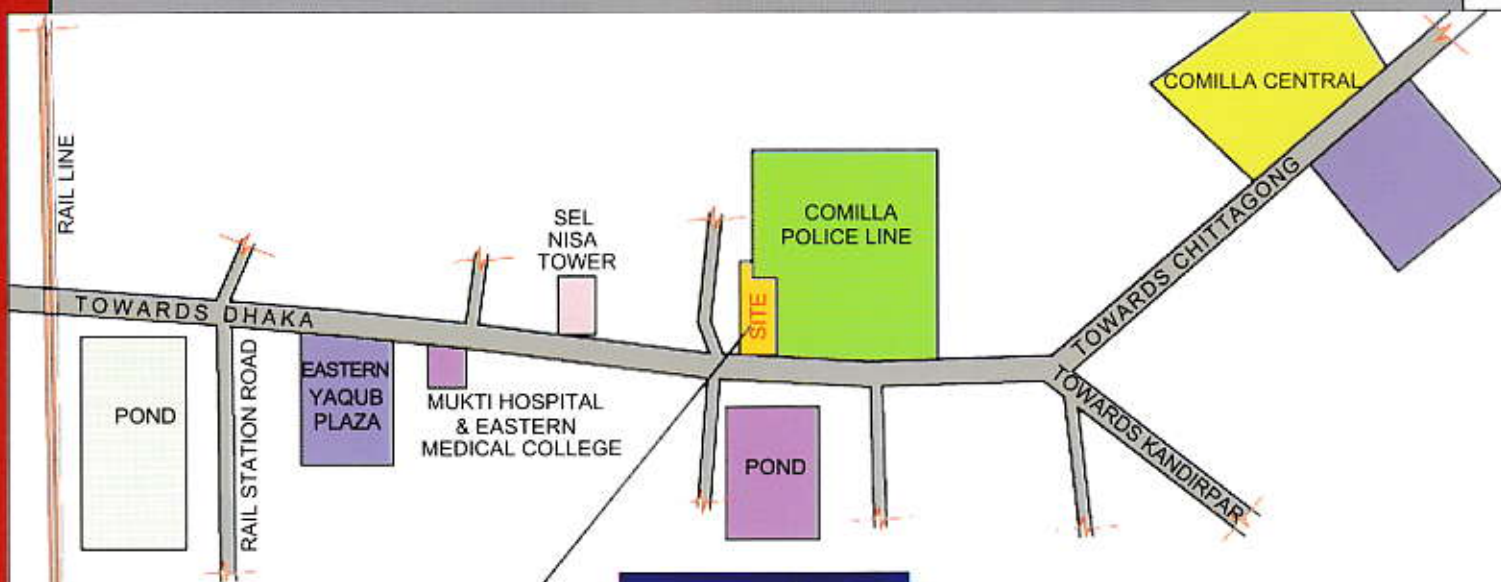
Day View



Hiver Tower

Race Coarse, Police Line, Comilla

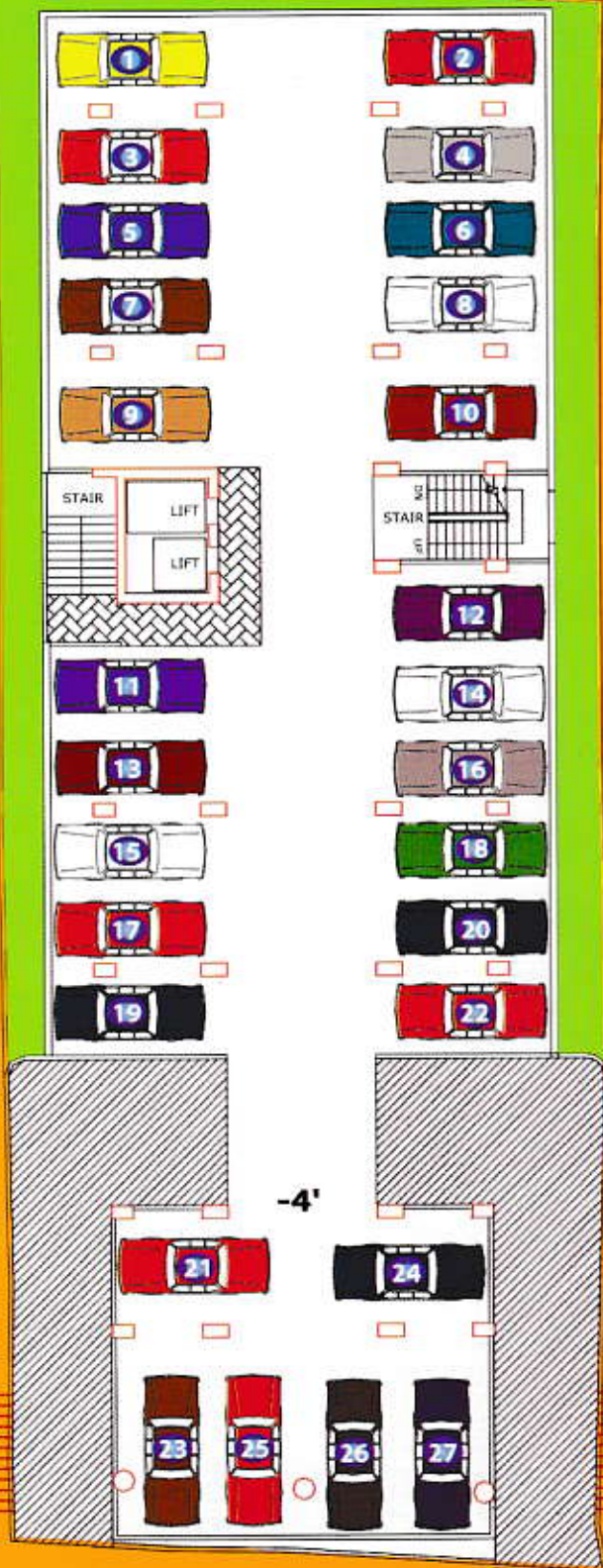
LOCATION MAP



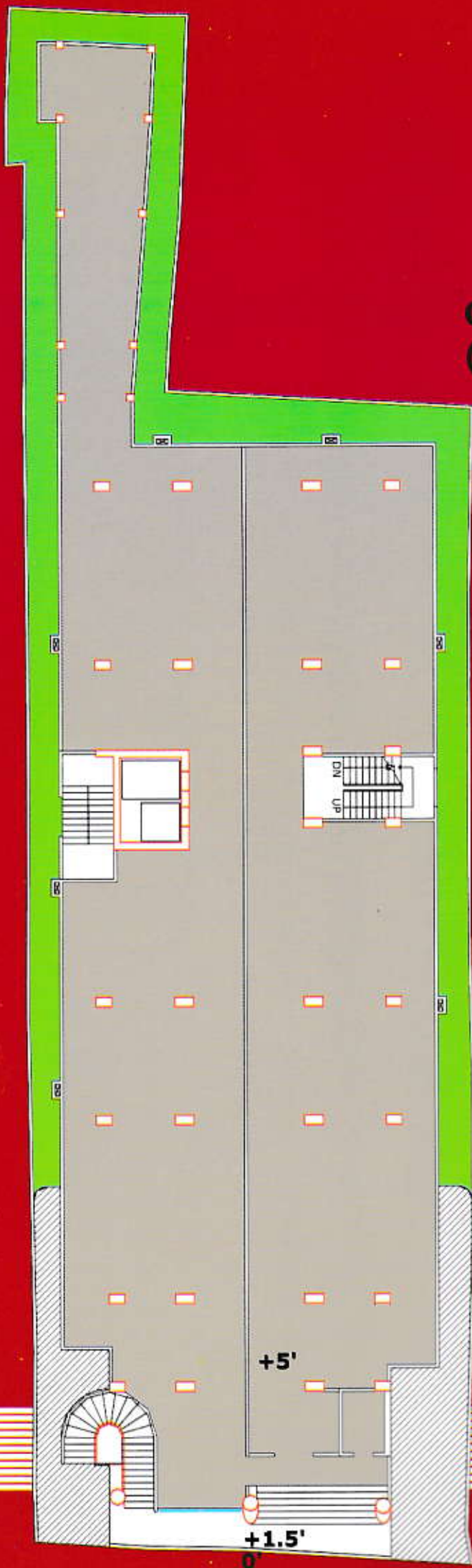
HIVER TOWER
Race Coarse, Police Line
Comilla



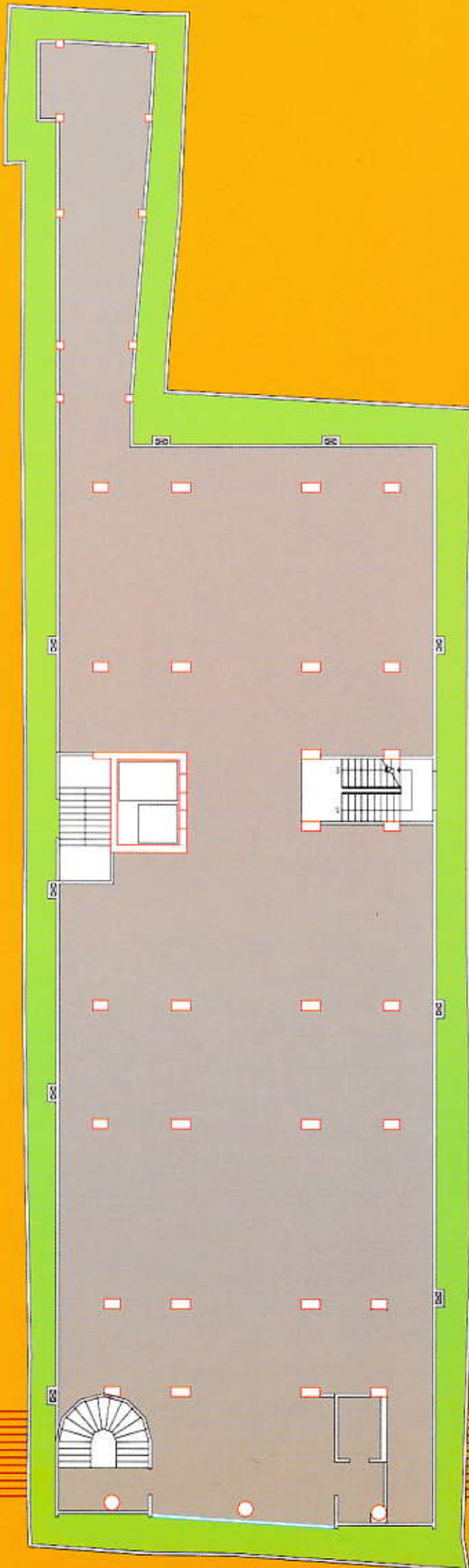
SEMI BASEMENT PLAN

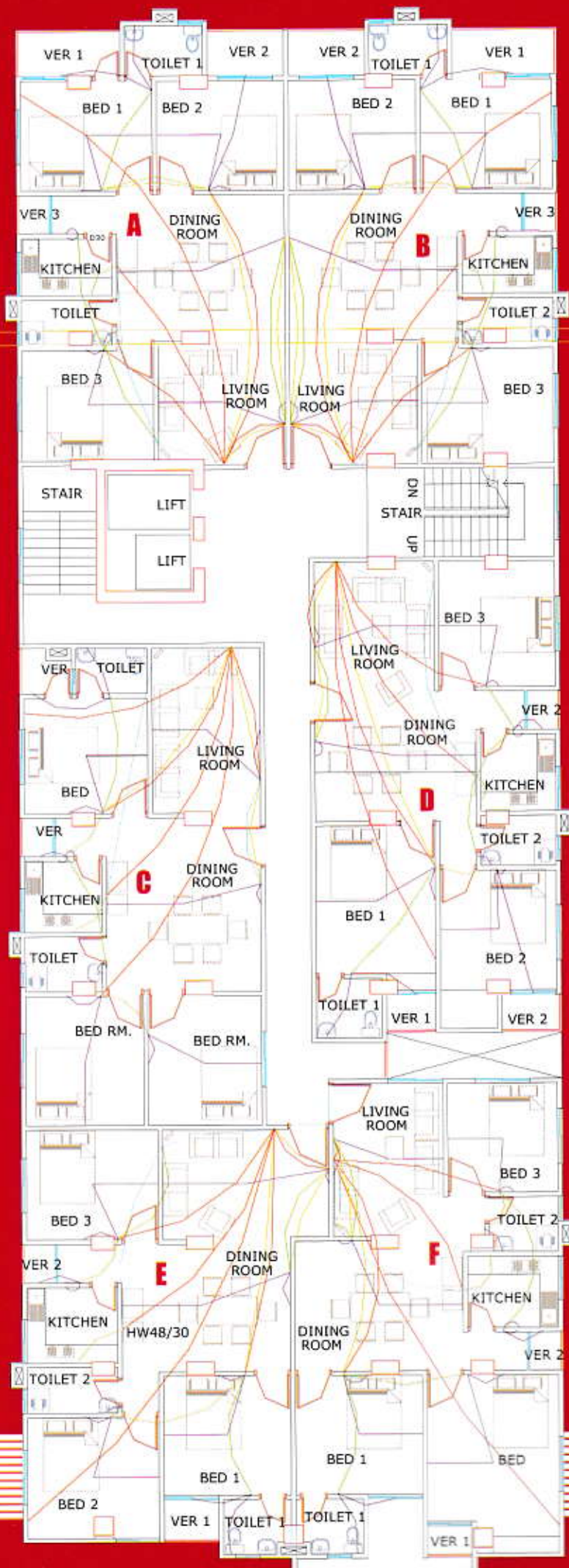


GROUND FLOOR PLAN (COMMERCIAL SPACE)

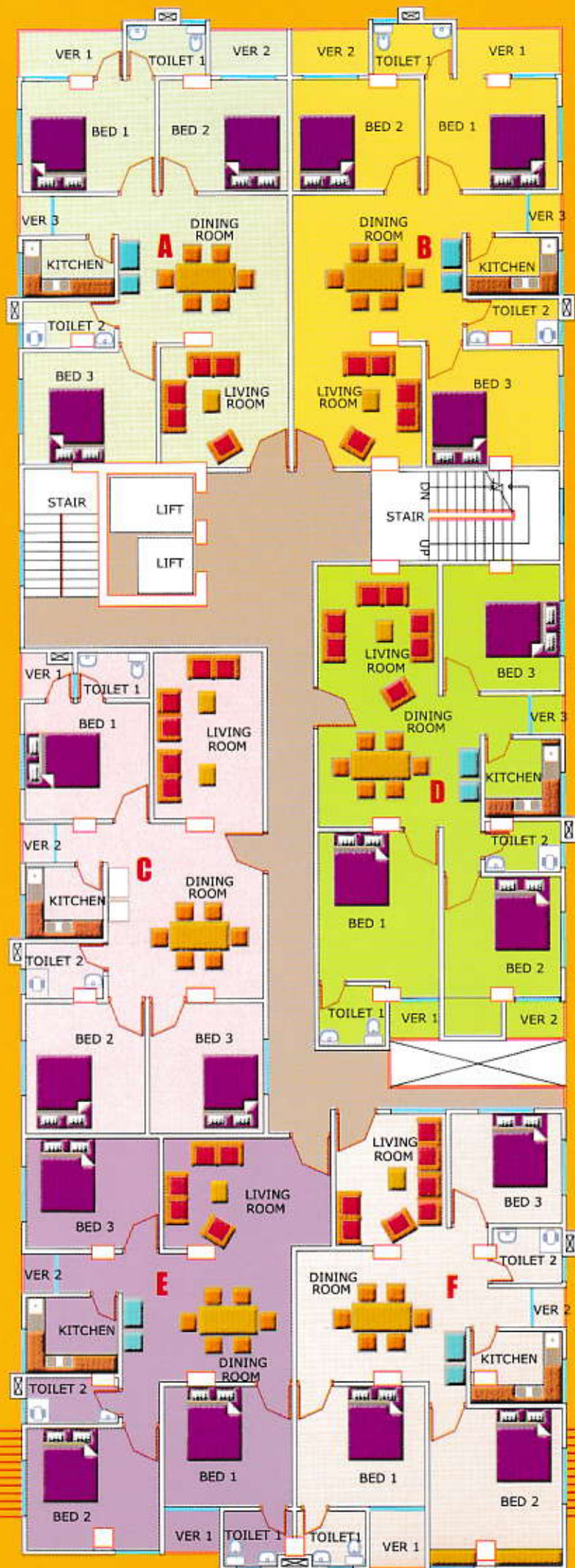


**1st, 2nd, 3rd, 4th
FLOOR PLAN
(COMMERCIAL SPACE)**





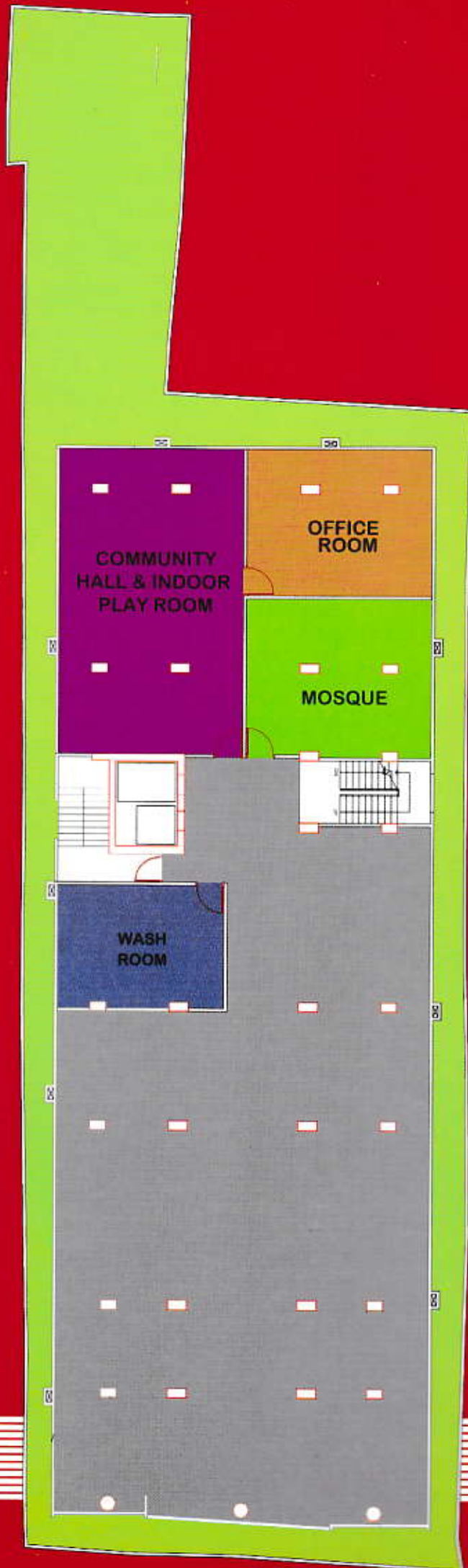
5th to 14th ELECTRICAL PLAN (RESIDENCIAL SPACE)

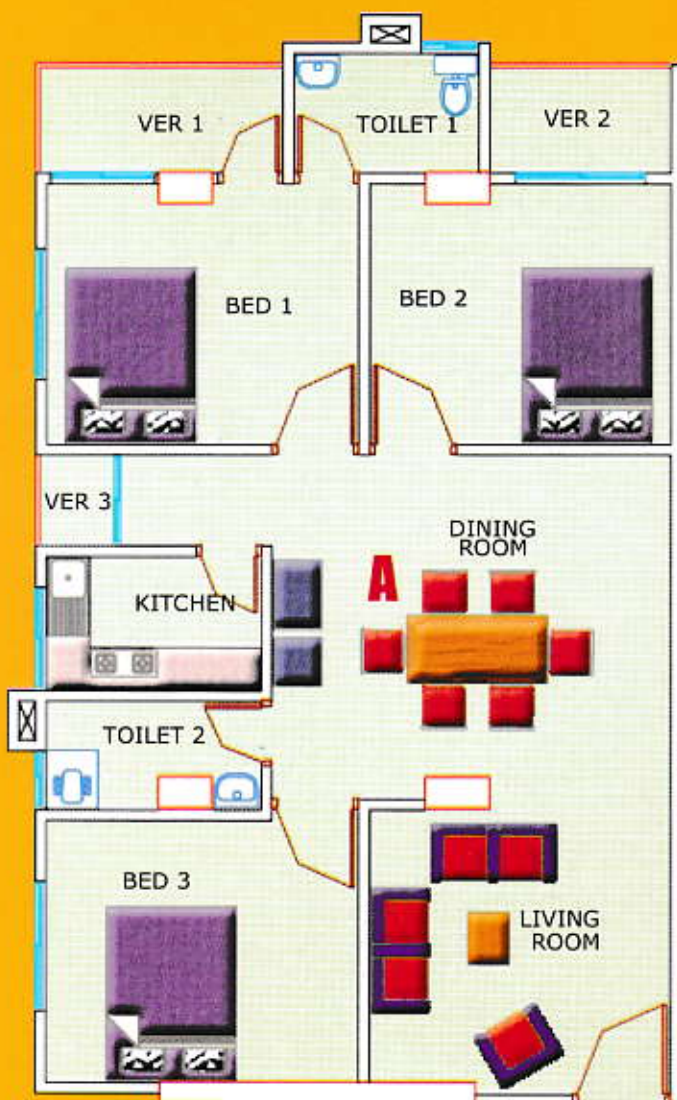


**5th to 14th
Floor PLAN
(RESIDENCIAL SPACE)**



ROOF TOP PLAN





Type A

1250 sft

BED 1- 12'X10'

BED 2- 11'7"X9'11"

BED 3- 12'X10'1"

DINING- 15'4X13'8"

LIVING- 11'7"X10'7"

KITCHEN- 8'3X5'2"

TOILET 1- 7'1"X4'7"

TOILET 2- 8'3"X5'2"

VER. 1- 9'6"X4'2"

VER. 2- 6'11"X4'2"

VER. 3- 3'X3'11"

TYPE B

1250 sft

BED 1- 11'7"X10'

BED 2- 12'X10'

BED 3- 12'X10'6"

DINING- 15'4X13'8"

LIVING- 11'7"X10'11"

KITCHEN- 8'3X5'2"

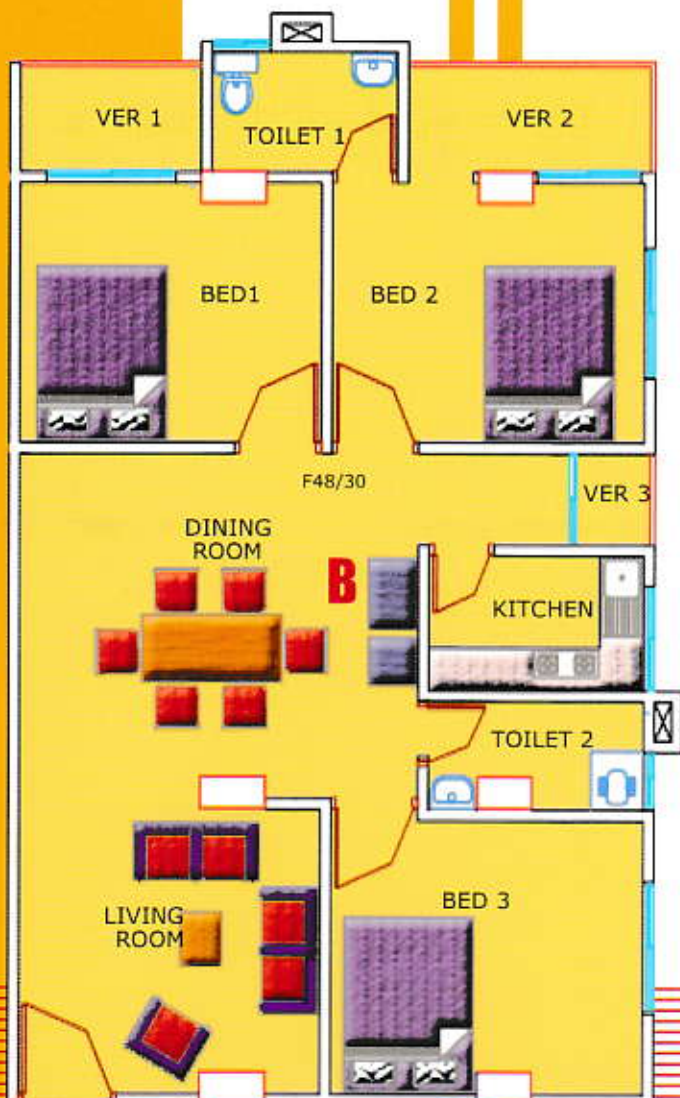
TOILET 1- 7'1"X4'7"

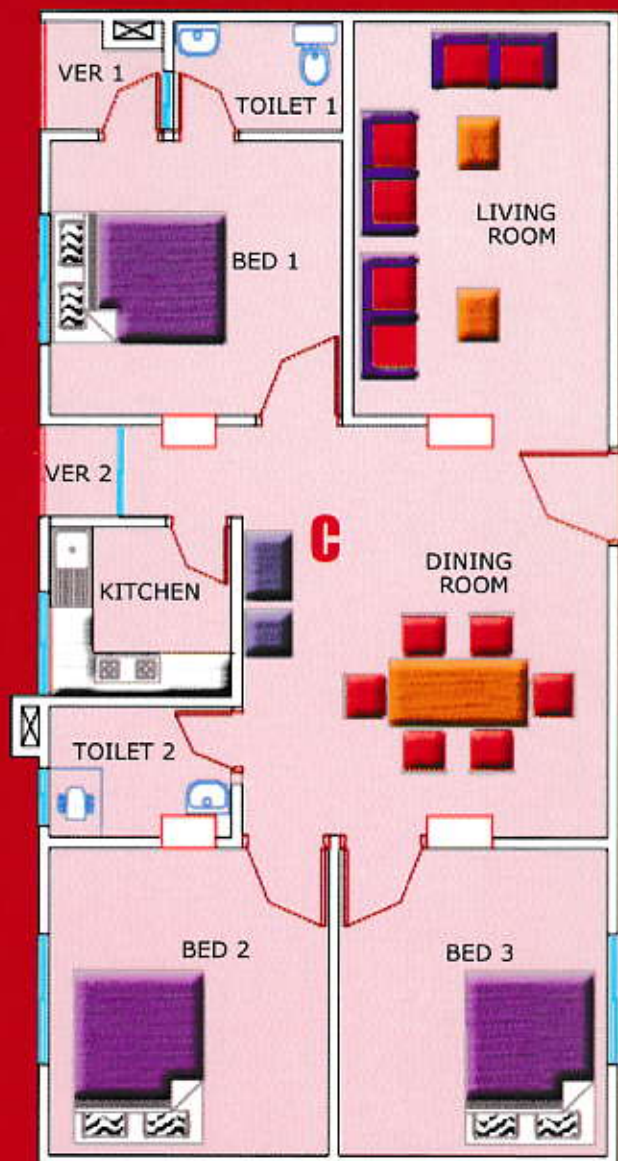
TOILET 2- 8'3"X5'2"

VER. 1- 7'X4'2"

VER. 2- 9'4"X4'2"

VER. 3- 3'X3'11"





TYPE D

1250 sft

BED 1- 10'11"X13'6"

BED 2- 10'7"X14'5"

BED 3- 10'7"X11'5"

DINING- 14'8"X9'1"

LIVING- 10'11"X14'7"

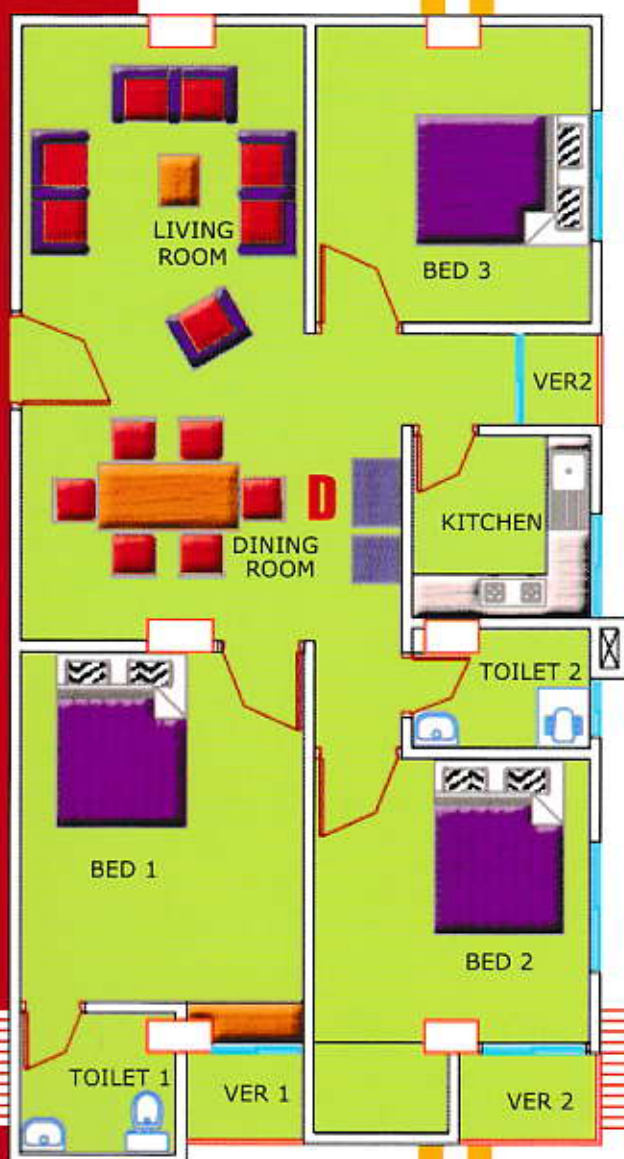
KITCHEN- 6'7"X7'

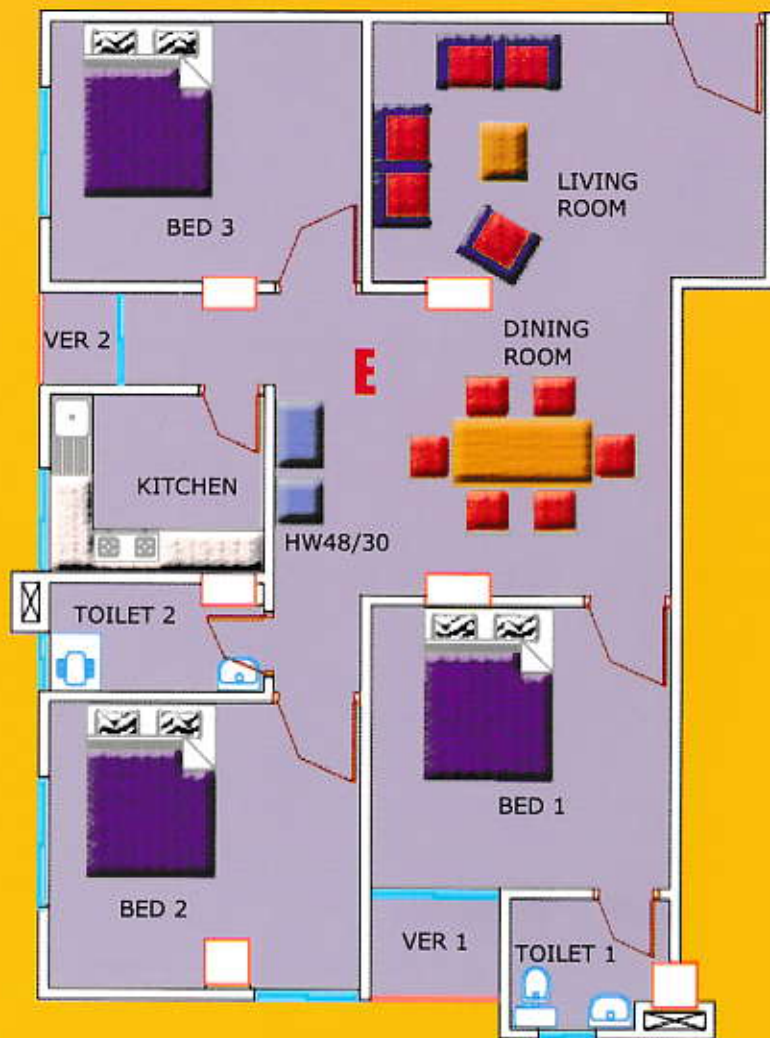
TOILET 1- 6'X5'5"

TOILET 2- 6'10"X4'7"

VER. 1- 4'6"X3'6"

VER. 2- 5'5"X3'6"





TYPE *E*

1250 sft

BED 1- 11'7"X10'10"

BED 2- 12'X11'

BED 3- 12'X10'5"

DINING- 15'4"X11'

LIVING- 15'2"X11'

KITCHEN- 8'3"X6'10"

TOILET 1- 6'2"X5'

TOILET 2- 8'3"X4'2"

VER. 1- 5'X3'11"

VER. 2- 3'X3'6"

TYPE *F*

1250 sft

BED 1- 11'7"X10'10"

BED 2- 12'X14'15"

BED 3- 10'X9'11"

DINING- 15'4"X10'10"

LIVING- 10'X11'11"

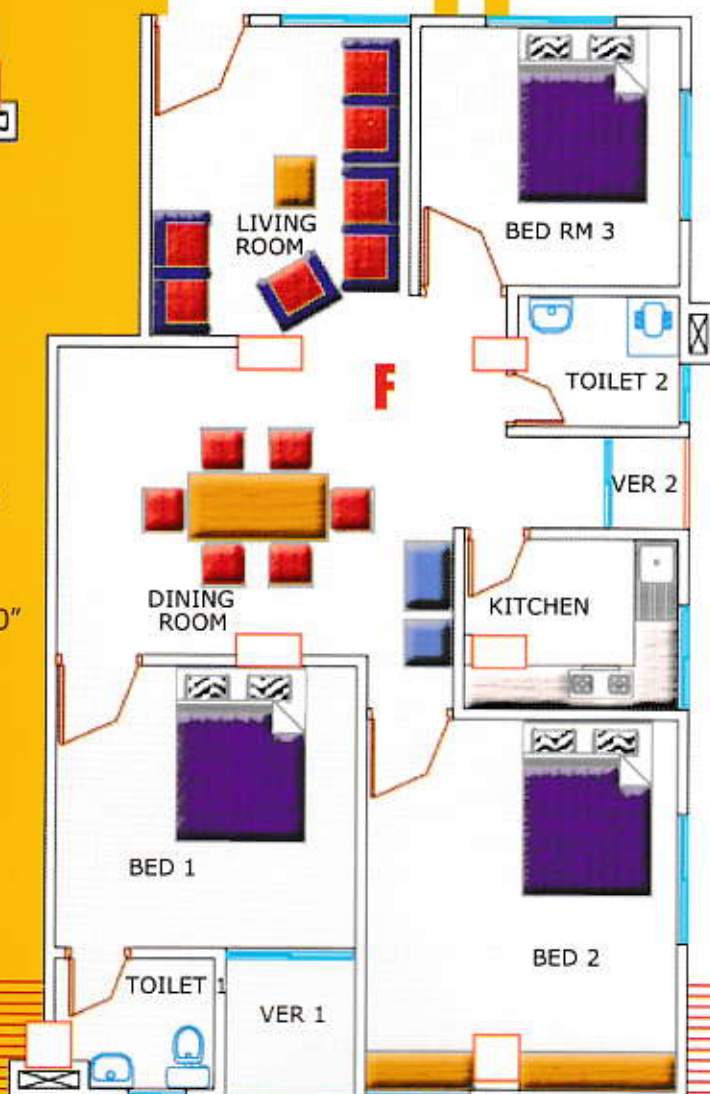
KITCHEN- 8'3"X6'6"

TOILET 1- 6'2"X5'

TOILET 2- 6'3"X5'

VER. 1- 5'X5'5"

VER. 2- 3'X3'6"



SPECIFICATION

BATHROOMS

- Local Commode in master and long pan in other toilets.
- Local fittings, soap cases, towel rails, glass shelf and mirror in all toilets.
- Local ceramic tiles (10"X8") in all toilets up to full height wall & homogeneous (12"x12") tiles in floor.
- Plastic door.

KITCHEN

- Provision for sink (single bowl single tray)
- Provision for double burner gas outlet

DOORS & WINDOWS

- Solid main entrance door (Gamary) with Mortise lock.
- All internal Doors will be single panel veneered flush door with Polish.
- All internal Doorframes will be Mahogany.
- All sliding window of Thai aluminum section (3 inches) with 5mm tinted glass.
- Safety grills in all windows.
- Toilet & Kitchen doors will be plastic.

WALL

- All internal walls will be plastered.
- Outside walls of plastered and weather coat paint.

FLOORS

- 12"x12" Homogeneous tiles (RAK/Fu-Wang/Sun Power) in all floors stair & lobby, Kitchen floor.

PAINTING & POLISHING

- Distemper on all internal & weather coat on external Walls. Distemper on ceilings.
- Polished doors frame and shutter.
- Synthetic Enamel Paint on the all Type of Grill.

SPECIFICATION

ELECTRICAL

- Good quality Local MK type switches, Plug Point, circuit breaker and other fittings.
- Electrical distribution board with main switch.
- Concealed electrical wiring.
- Independent electrical meter for each apartment.
- All power outlets with earthing connection.
- Concealed fan hook.
- Provision with power point for air conditions in master bedroom.
- Light points in verandah.
- One Telephone connection Point.
- One Intercom connection.
- Two emergency points from generator.

UTILITY LINES (WATER & GAS)

- Concealed waterlines
- Sewerage and water connected to WASA.
- One best quality water pump.
- Bakhraabad gas approved plumbing design.
- Concealed gas line, individual gas raiser.

OPTIONAL FEATURES

A few optional items may be provided upon specific requirements but at their own costs and is subject to approval of the company.

GENERAL AMENITIES OF APARTMENTS

(02) Lift, Sub Station, Generator, Pump, Heavy secured gate, Under Ground car parking, underground water reservoir (suitable size) & roof top water tank (RCC), main stair case with to climb steps, adequate lighting and fire protection features.



"Rowshan Tower" (4th Flr), 152/2/A-2, West Panthapath, Dhaka -1205. Tel: 8119731, 8117707, 9123866, Fax: 8125165
www.hivertechbd.com, E-mail: info@hivertechbd.com